

ONE *of* MANY

NUMBER NINE

SOUTH WEST CONNECTION

ISSUE # 9 PAGE # 1

OVERVIEW

In 1994, I authored, photographed, self-published and privately-distributed a monograph entitled “Zuni Fetish Carvings”. At that time it was the only introductory book on the topic, with a full listing of current artists and what defined the ‘Fetish Explosion’ that had started in the early 1980s [and continues today].

After almost 20 years, most of the original art (over 200 fetishes) is now finally being offered for sale. Each of the fetishes was made in 1993 or earlier, a few as old as the 1930s.

Buyers will receive a certificate of authenticity, stating the page and photo number with each purchase. Also, a limited number of copies of “Zuni Fetish Carvings” (long out-of-print) may be purchased to complement these unique pieces.

EAGLE ON ALERT



Artist: Christine Banteah
Materials: Picasso Marble
Dimensions: 3" x 1.5"
Page 22 Photo # 57
Retail \$375

ONE *of* MANY

NUMBER NINE

SOUTH WEST CONNECTION

ISSUE # 9 PAGE # 2

DINOSAUR



Artist: Herbert Halate

Materials: Pipestone

Dimensions: 1.5" x 5"

Page 22 Photo # 57

Retail \$180

OLLA MAIDEN



Artist: Delbert Cachini

Materials: Deer Antler

Dimensions: 3.5" x 1"

Page 5 Photo # 14

Retail \$140

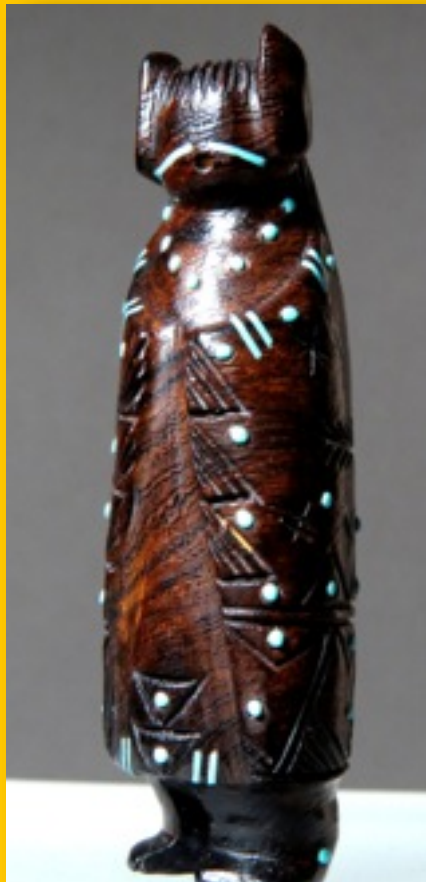
ONE *of* MANY

NUMBER NINE

SOUTH WEST CONNECTION

ISSUE # 9 PAGE # 3

MAIDEN



Artist: Colvin Peina

Materials: Ironwood

Dimensions: 3" x 1"

Page 11 Photo # 30

Retail \$450

LARGE BEAR



Artist: Peter and Dinah Gasper

Materials: Sandstone

Dimensions: 3" x 6"

BONUS

Retail \$350

ONE *of* MANY

NUMBER NINE

SOUTH WEST CONNECTION

ISSUE # 9 PAGE # 4

WOLF



Artist: Edna Leki

Materials: Serpentine

Dimensions: 1.5" x 2.75"

Page 20 Photo # 52

Retail \$225

FOX



Artist: Rodney Lawaikete

Materials: Fluorite

Dimensions: 0.75" x 2.5"

Page 10 Photo # 27

Retail \$90

ONE *of* MANY

NUMBER NINE

SOUTH WEST CONNECTION

ISSUE # 9 PAGE # 5

BIRD



Artist: Sarah Leekya

Materials: TQ nugget

Dimensions: 1.75" x 2"

Page 14 Photo # 35

Retail \$500



Three decades of direct buying on western reservations and selling directly to galleries, museums, specialty shops and collectorsAnd Now to the general public.

A commitment to fairness, quality and integrity - a vital link between Native American artists and the public. Inscribed and signed by author, if desired.

Dominating both the landscape and consciousness of all in its purview, Dowa Yalanne towers above the Zuni Pueblo. This natural redoubt provided a safe haven in the 16th century where Zunis fled to escape marauding Spanish conquistadors.

BestofZuni.com

Dr. Harold Finkelstein
Amy Finkelstein Snider