

ONE *of* MANY

NUMBER EIGHT

SOUTH WEST CONNECTION

ISSUE # 8 PAGE # 1

OVERVIEW

In 1994, I authored, photographed, self-published and privately-distributed a monograph entitled "Zuni Fetish Carvings". At that time it was the only introductory book on the topic, with a full listing of current artists and what defined the 'Fetish Explosion' that had started in the early 1980s [and continues today].

After almost 20 years, most of the original art (over 200 fetishes) is now finally being offered for sale. Each of the fetishes was made in 1993 or earlier, a few as old as the 1930s.

Buyers will receive a certificate of authenticity, stating the page and photo number with each purchase. Also, a limited number of copies of "Zuni Fetish Carvings" (long out-of-print) may be purchased to complement these unique pieces.

LIZARD IN MOTION



Artist: Louis Malie, Jr

Materials: Turquoise

Dimensions: 1" x 2"

BONUS

Retail \$350

ONE *of* MANY
NUMBER EIGHT

SOUTH WEST CONNECTION

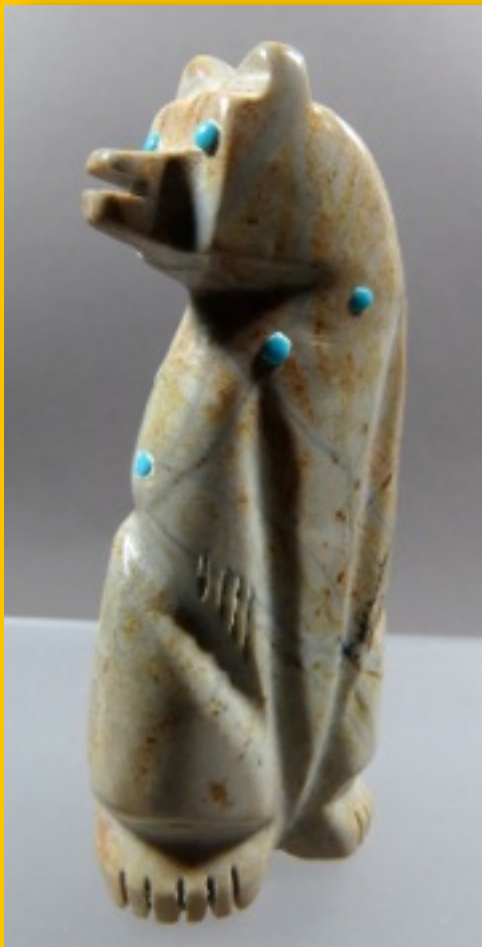
ISSUE # 8 PAGE # 2

LIZARD ON ROCK



Artist: Nelson Yatsattie
Materials: Picasso Marble
Dimensions: 1.75" x 2"
Page 17 Photo # 44
Retail \$60

STANDING BEAR



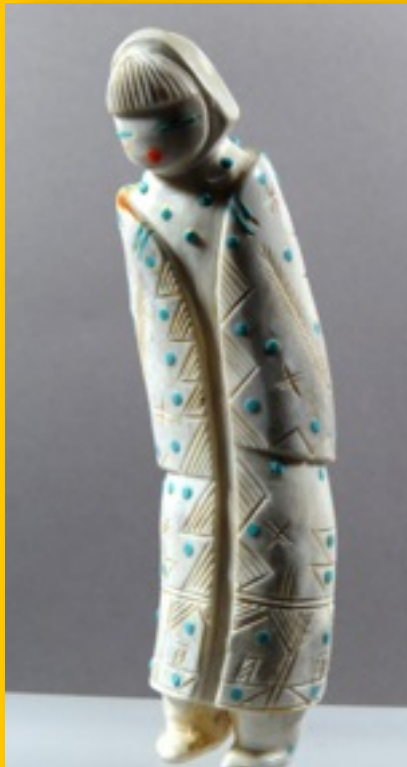
Artist: Carl Estate
Materials: Picasso Marble
Dimensions: 11.25" x 3"
Page 18 Photo # 45
Retail \$90

ONE *of* MANY
NUMBER EIGHT

SOUTH WEST CONNECTION

ISSUE # 8 PAGE # 3

MAIDEN WITH LONG COAT



Artist: Colvin Peina

Materials: Elk Antler

Dimensions: 5" x 1.25"

Page 22 Photo # 56

Retail \$500

FROG ON LEAF



Artist: Dwight Quam

Materials: Serpentine

Dimensions: 1.25" x 3.75"

Page 13 Photo # 59

Retail \$120

ONE *of* MANY
NUMBER EIGHT

SOUTH WEST CONNECTION

ISSUE # 8 PAGE # 4

ANTEATER



Artist: Brian Yunie

Materials: Serpentine

Dimensions: 1" x 3.5"

Page 15 Photo # 38

Retail \$140

HUGE FROG



Artist: Pete & Dinah Gasper

Materials: Orange Alabaster

Dimensions: 1.75" x 4.75"

Page 21 Photo # 54

Retail \$400

ONE *of* MANY
NUMBER EIGHT

SOUTH WEST CONNECTION

ISSUE # 8 PAGE # 5

HORSE



Artist: Simon Bica
Materials: Alabaster
Dimensions: 2.5" x 3.25"
Page 4 Photo # 8
Retail \$120



Dominating both the landscape and conscientious of all in its purview, Dowa Yalanne towers above the Zuni Pueblo. This natural redoubt provided a safe haven in the 16th century where Zunis fled to escape marauding Spanish conquistadors.

Three decades of direct buying on western reservations and selling directly to galleries, museums, specialty shops and collectorsAnd Now to the general public.

A commitment to fairness, quality and integrity - a vital link between Native American artists and the public. Inscribed and signed by author, if desired.

BestofZuni.com

Dr. Harold Finkelstein
Amy Finkelstein Snider